

ONBOARD MONITORING SOLUTION



Onboard Solution for Topcon Total Stations

- Project Management
- Data Acquisition
- Photo Documentation
- Analysis
- Visualisation
- Alerting

It's time.

Unlike other monitoring systems DC3mobile requires no external equipment or computers. Data collection, analysis, visualisation and alerting is carried out within DC3mobile running on Topcon's robotic total stations.

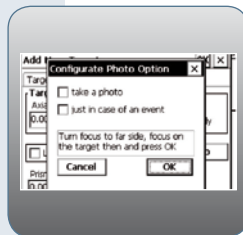
The result is a uniquely efficient and flexible monitoring system, ideal for short-term monitoring projects. Developed specifically for the Topcon GPT-9000A, QS and Topcon IS / IS2 series total stations, even inexperienced personnel can operate the software after a short training period. Available in two versions, DC3mobile Standard allows for a comprehensive monitoring package with project management, cyclical free-stationing and report generation.

The Advanced version of DC3mobile offers extra features including 3D analysis of data, visual and external alarms and alerting amongst others. The project management enables rapid creation, configuration and editing of monitoring projects, and individual target properties can be setup with ease. A number of import and export options ensure smooth exchange of data with other applications such as DC3report, DC3pro or Survey-Master.

Choose from a number of methods for alerting, either visual prompts from within the onboard software itself, or by connecting up a number of different external devices. Using the integrated report generator in DC3mobile, you can produce detailed reports for visualisation on the fly, all on the robotic!

DC3 mobile

DC3mobile and Topcon Total Station - A Perfect Team



Data Acquisition

DC3mobile offers a number of different ways to configure the software for data collection. Each target can be customised to have individual tolerance and warning levels both in XYZ and as a 3D vector.

- Freely definable tolerance cylinder for tunnel monitoring.
- Activation of laser pointer or point guide in low light conditions such as tunnels, night-time working, etc.
- Targets measured on face 1 or both face 1 & 2
- Prism constants for each individual target.
- Stable (Fixed) or Observed target types.
- Photo documentation (on the IS) can be integrated in the automatic report generation.

Data analysis

Prior to each measurement cycle, DC3mobile carries out a free stationing operation to Stable (Fixed) points which are computed and analysed in 3D.

- Allows an almost free choice of location for the total station if sufficiently stable points exist on site.
- Total station can be in unstable object area (i.e. the crown area of a dam, top of a railway embankment).

Alerting

DC3mobile can be used to send alerts to different types of warning equipment. Using the Imaging Station, internal camera images can also be sent by email. This adds great value to the measured data.

Choose from:

- Flash lamps
- Horns
- Cell modem for SMS messages
- GPRS Modems to send emails to predefined recipients.



DC3mobile – On board monitoring solution for Topcon Total Stations

Data Acquisition, Data analysis, Alerting, Visualisation



Visualisation

DC3mobile generates comprehensive and meaningful reports onboard, and outputs them as HTML report files. In addition, using a connection to an external modem the data can be transferred via various methods:

- via email to predefined addresses
- via an FTP upload to a preconfigured server
- photos captured by the IS are used in the report

DC3report expands the reporting possibilities to visualise site representation via 3D VRML Models. These surface models can be used to understand a site without needing local knowledge. Integrated DXF export allows further processing in external software such as Topcon SurveyMaster.

DC3mobile STANDARD

Onboard monitoring system for the following Topcon IS, QS and GPT-9000A. Functionality includes:

- Project management
- Freely configurable capture of measured data
- Cyclical stationing calculation
- Report generator
- Photo documentation (available on IS)
- Measured data stored as ASCII text

DC3mobile ADVANCED

Complete short-term monitoring solution with analysis and alerting features. Use with Topcon IS, GPT-9000A and QS total stations. Functionality as DC3mobile STANDARD plus:

- 3D-analysis function
- On-screen alarm function
- Connection of external alarm appliances
- DC3report office module
- Import / export function for DC3pro
- Import / export function for ImageMaster and IS



It's time.

The Leader in Positioning Technology ...

Topcon offers positioning products that deliver unparalleled site-wide performance and integration. Topcon's history of technological advances and our reputation for superior reliability means there's no other company positioned to provide you with a better "Total Positioning Solution." From survey to inspection Topcon, through our dealer network, provides the innovative technology that gives surveyors, civil engineers, contractors, equipment owners, and operators the competitive edge by addressing such critical issues as increasing profits, quality craftsmanship, improving productivity, lowering operating costs, and enhancing job site safety.

Full positioning integration field-to-finish: That's the goal of Topcon. When it's time for you to step up to the next level,

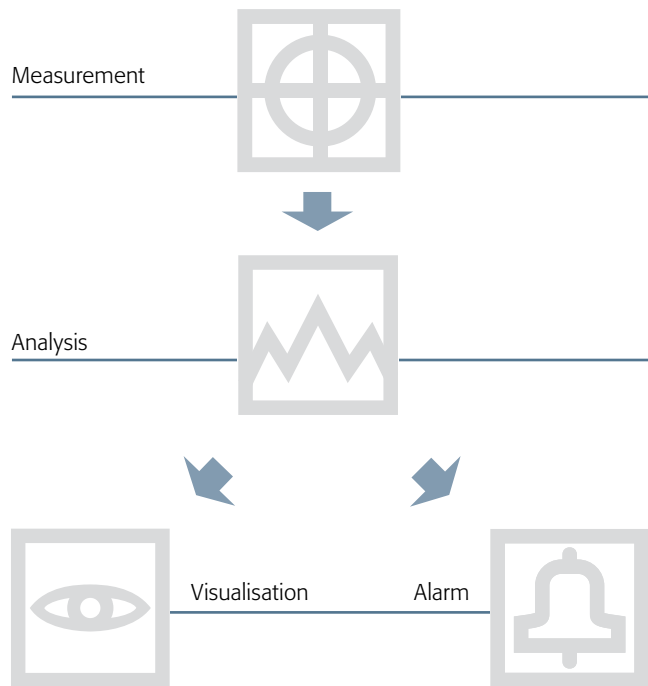
The Leader in Customer Satisfaction ...

To ensure that your Topcon instrument maintains peak performance, your local Topcon dealer offers factory trained and certified service technicians. If service isn't available in your area, our European Service Center offers a repair and return policy second to none.



Specifications subject to change without notice
©2010 Topcon Corporation. All rights reserved. 09/10

BASIC FUNCTIONALITY



● Solution Features

- Intuitive project management (Create, edit, configure project details)
- User-configurable data acquisition
- Connection to external alarm equipment (Flashing lamps, external modems)
- Photo documentation (Topcon IS)
- Onboard Report generator (HTML reports)
- 3D analysis function
- Cyclic resection
- Import and Export functions (DC3pro, DC3report, SurveyMaster)
- Data transfer via FTP
- Alert via phone call, SMS, Email
- Office Software (DC3report) for data management

Your local authorized Topcon distributor is: