

DUAL FREQUENCY GNSS RECEIVER



The Next Generation

- GPS+GLONASS
- Rugged, Lightweight, Magnesium-Alloy Construction
- Bluetooth® connectivity
- Integrated UHF Radio
- Integrated GSM /GPRS
- Bright LED Panel
- SD/SDHC Memory Card Slot
- Removable Li-Ion Battery

It's time.

HiPer II - Dual Frequency GNSS Receiver

● Completely Integrated, Advanced GNSS Solution

Topcon raises the industry standard once again by presenting the next-generation of our popular receiver system – the HiPer II. Smaller. Lighter. Faster. More Affordable. The HiPer II receiver is designed on these clear-cut concepts. This state-of-the-art receiver not only offers further enhanced ability, but also increases receiver performance and user-friendliness as well as a fully customizable structure providing our customers with the maximum flexibility to choose the system options they require.

● GPS+ Dual Frequency Signal Tracking

Topcon's industry-leading GPS+GLONASS, dual-frequency signal tracking technology offers superior positioning capability over the GPS only receivers. It makes a real difference where sky visibility is limited such as in urban canyons or in woodlands, near tall fences or other blockages.

● Rover with an Internal Radio Transmitter/Receiver

No more hassles of connecting an external radio. The HiPer II has an optional internal radio with receive and transmit capabilities, eliminating cables from both rovers and base stations. Topcon provides a choice of internal radio protocol from Topcon Digital UHF or Satel.

● Internal GSM Modem for Network RTK

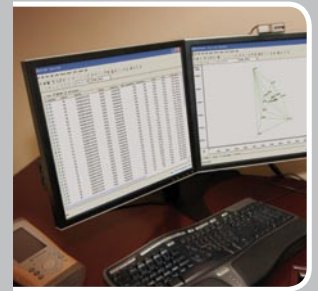
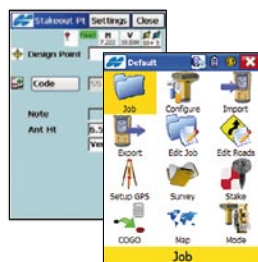
Designed as a perfect network RTK rover, the HiPer II gives you the option of an internal GSM modem. With its completely integrated design, the HiPer II eliminates the hassles of external modems and cables, all in a lightweight, rugged design.

● Voice Messages

Multi-lingual, clear-tone voice messages notify the users of critical receiver information and status such as satellite signal interruption, radio interference, low battery, low memory and more. This feature improves your efficiency by providing information without having to look at the LED display or controller screen.

● TopSURV Field Controller Software

The easy-to-navigate, intuitive user interface of TopSURV software offers all users its full functionality with the shortest learning curve. TopSURV supports all surveying tasks, including topo data collection, as-built survey and stakeout.



● Durability that withstands the most severe Condition

The magnesium alloy housing provides maximum ruggedness for the compact and lightweight receiver body. With the IP67 environmental rating, the HiPer II can handle almost any field conditions.

● Data Storage with SD or SDHC Cards

A large volume of static observation data from long term survey projects, long sessions or displacement monitoring can be stored onto the popular SD cards or large capacity SDHC cards.

● Topcon Tools

Our powerful and complete GNSS Data Management & Post Processing Software completes the full Topcon field-to-finish GNSS solution. With comprehensive data manipulation, processing, and analysis, Topcon Tools unlocks the full power of the Topcon GNSS systems solution.

● Choice of Field Controller Solutions

Topcon not only provides the greatest flexibility with the HiPer II receiver design, but also provides you with the choice of field controller. Choose from the small, lightweight FC-25A, mid range FC-250 or ultra-rugged, full-keyboard model FC-2500 for the ultimate field performance.



Smaller. Lighter. Faster. Affordable.

Compact, Lightweight, Cable-free Solution for All GNSS Positioning Applications

HiPer II



- | | | | |
|-------------------------------------|---|----------------------------------|--|
| 1 L1/L2 GNSS antenna | 5 Power button | 8 Bluetooth® connectivity | 11 Serial connectivity |
| 2 Super BrightLED Display | 6 Remaining battery life | 9 Internal radio | 12 Remaining memory |
| 3 Session timer | 7 72-channel L1/L2 GNSS receiver | 10 Radio connectivity | 13 Number of Tracked Satellites |
| 4 Internal Bluetooth® module | | | |

● HiPer II Standard Configuration

- HiPer II GNSS Receiver
- BDC58 Li-ion battery x 2
- CDC68 charger
- Serial cable
- 100 mm spacer (for HiPer II with UHF radio)
- 5/8 inch conversion plug
- User's manual (CD-ROM)
- Carrying case

● Tailor the System to Your Own Requirements

- Fully customizable receiver functionality and a wide variety of options provide the maximum flexibility to tailor the HiPer II system to your own requirements.
- GPS or GPS+GLONASS
 - L1 or L1/L2
 - Internal Radio Cellular Modem
 - Digital UHF
 - Static or RTK+Static

● Choice of:

- Memory Devices
- Field Controllers
- Software Solutions

It's time.

The Leader in Positioning Technology ...

Topcon offers positioning products that deliver unparalleled site-wide performance and integration. Topcon's history of technological advances and our reputation for superior reliability means there's no other company positioned to provide you with a better "Total Positioning Solution."

From survey to inspection Topcon, through our dealer network, provides the innovative technology that gives surveyors, civil engineers, contractors, equipment owners, and operators the competitive edge by addressing such critical issues as increasing profits, quality craftsmanship, improving productivity, lowering operating costs, and enhancing job site safety.

Full positioning integration field-to-finish: That's the goal of Topcon. When it's time for you to step up to the next level, it's time to turn to Topcon.

The Leader in Customer Satisfaction ...

To ensure that your Topcon instruments maintains peak performance, your local Topcon dealer offers factory trained and certified service technicians. If service isn't available in your area, our European Service Center offers a repair and return policy second to none.

Specification additional

*1 Accuracy depends on the number of satellites used, obstructions, satellite geometry (DOP), occupation time, multipath effects, atmospheric conditions, baseline length, survey procedures and data quality.

*2 1 Hz standard. Higher rates available as options.

*3 Internal digital UHF TPS or Satel protocol are available

*4 External Battery source



www.topcon.eu

The Bluetooth word mark and logos are owned by the Bluetooth SIG, Inc. and any use of such marks by Topcon is under license. Other trademarks and trade names are those of their respective owners.

Specifications subject to change without notice.
©2010 Topcon Corporation. All rights reserved 09/2010

SPECIFICATIONS

TRACKING CAPABILITIES	
Number of Channels	72 Universal Channels
Tracked Signals	GPS L1 CA, L1/L2 P-code, L2C GLONASS L1/L2 CA, L1/L2 P-code SBAS WAAS, EGNOS, MSAS
POSITIONING ACCURACY*1	
Static	L1+L2 L1 only
	H: 3 mm + 0.5 ppm V: 5mm + 0.5ppm H: 3 mm + 0.8 ppm V: 4 mm + 1 ppm
Kinematic	L1+L2
	H: 10 mm + 1 ppm V: 15 mm + 1 ppm
RTK	L1+L2
	L1+L2 V: 15 mm + 1 ppm
DGNSS	<0.3 m
USER INTERFACE	
Single-button operation	for power, receiver reset, memory initialisation
Display Panel	22 LED status indicators
DATA MANAGEMENT	
Data Format	RTCM SC104 2.1/2.2/2.3/3.0/3.1, CMR, CMR+, NMEA, TPS
Update/Output rate*2	1 Hz, 5 Hz, 10 Hz, 20 Hz
Communication port	RS-232C (4,800 to 115,200 bps)
WIRELESS COMMUNICATION	
Bluetooth® modem	V.1.1, Class 1, 115,200 bps
UHF radio*3	Internal, receiver (RX) and transmitter (TX), 410 to 470 MHz
GSM modem*3	Internal
ENVIRONMENTAL	
Dust and water protection	IP67 (IEC 60529:2001) at closing all connector caps. Protected against temporary immersion up to 1 m depth.
Shock	2 m pole drop
Operating / Storage Temperatures	-40° to +65°C / -45° to +70°C
Humidity	100%, condensing
PHYSICAL	
Enclosure	Magnesium alloy housing
Size	Dia. 184 x H 95 mm
Weight HiPer II receiver / BDC58	1.1 kg / 195 g
Weight Radio/GSM modems	115 to 230 g depending on modem specifications
POWER SUPPLY	
Standard battery BDC58	Detachable, Li-ion rechargeable battery, 7.2V, 4.3 Ah
Operating time at 20°C	>7.5 hours in static mode w/Bluetooth connection
Charger CDC68	Recharging time
	Approx. 4 hours at 25°C (100 to 240V AC (50/60 Hz)*4)
External power	Input voltage 6.7 to 18V DC

Your local authorised Topcon distributor is: